

Universal Stacking System with Sliding Shelf

Clever, space-saving laundry system

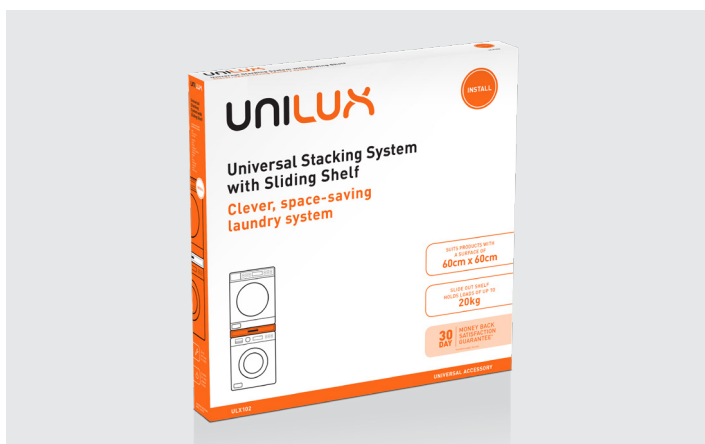
ULX102



DESCRIPTION

Safely stack your washing machine and dryer, while enjoying the convenience of a handy slide-out shelf, perfect for sorting and folding laundry.

Available at leading electrical retailers.



TIPS/ FEATURES

- Ensure the washing machine is on an even surface and is completely level prior to installing kit and stacking dryer on top
- To avoid personal injury, use correct equipment and ask for assistance when moving and lifting appliances
- Features 4 L-brackets which allow you to safely and securely stack front load washing machines and dryers. To prevent movement during operation, loading & unloading.
- Stacking system minimises noise and vibration during machine operation
- Includes an optional securing strap for additional peace of mind

CONTENTS

The following items are included in the kit.

- 1 x Connection kit
- 1 x Securing strap & clamp
- 4 x Securing screws
- 2 x Adhesive anti-vibration, anti-slip pads

SUITABLE FOR MOST BRANDS INCLUDING:

AEG
Electrolux
Simpson

Ariston
Beko
Bosch
Euromaid
Fisher & Paykel
Gorenje
Haier
LG
Miele
Samsung
Siemens
SMEG
Whirlpool

GET IN TOUCH WITH US

For more information on all UNILUX accessories, phone or email our customer care teams

AUSTRALIA

1300 363 640
customer@electrolux.com.au
uniluxaccessories.com.au

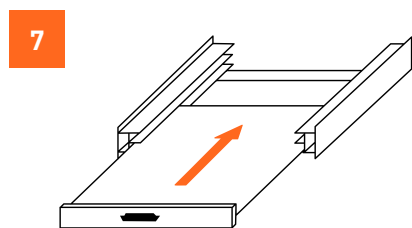
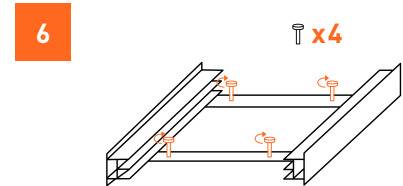
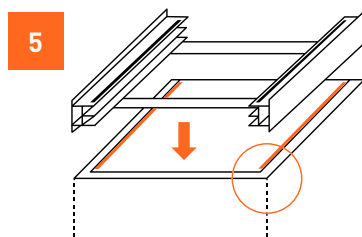
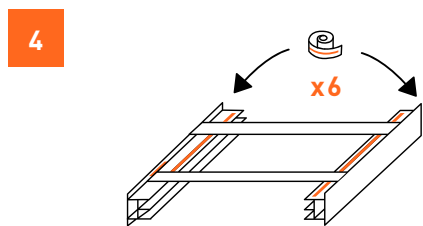
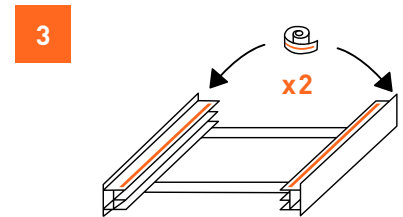
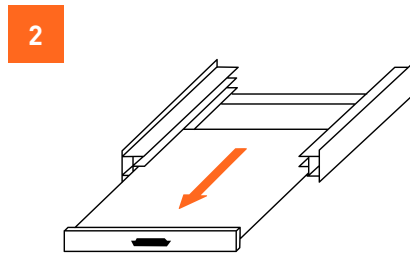
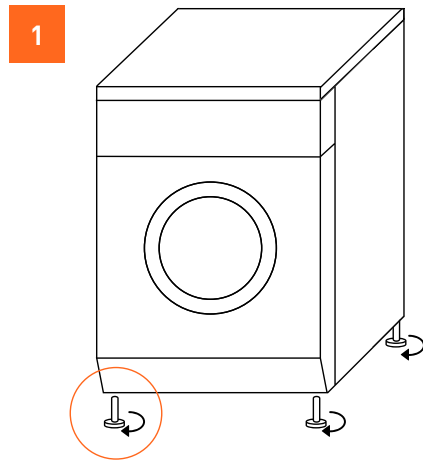
NEW ZEALAND

0800 234 234
customer@electrolux.co.nz
uniluxaccessories.co.nz

INSTALLATION

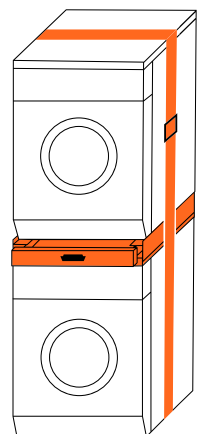
Instructions for the connection kit

- 1 Unscrew and remove the legs of the dryer
- 2 Take out the shelf
- 3 Cut foam strips from the roll and stick them on the connection kit. Cut in small pieces where needed. You need 2 large pieces on the top, 1 on each side
- 4 Place 6 smaller pieces on the bottom, 3 on each side
- 5 Ensure you only place the foam strips on the flat surfaces as shown
- 6 Screw the kit on the top of your washing machine using the 4 holes
- 7 Place the shelf back into the drawer. You can now place the dryer over the washing machine



8 FOR ADDED SECURITY. FIT THE STRAP AS SHOWN.

Fit the strap around both appliances, feed it through the clamping lock and pull it tight to prevent the appliances from moving or falling over.



GET IN TOUCH WITH US

For more information on all UNILUX accessories, phone or email our customer care teams

AUSTRALIA

1300 363 640
customer@electrolux.com.au
uniluxaccessories.com.au

NEW ZEALAND

0800 234 234
customer@electrolux.co.nz
uniluxaccessories.co.nz